



BETHANY COMMONS ASSISTED LIVING

*For a setting that offers freedom combined with the comfort of knowing supportive services are available, choose The Commons assisted living. Shape your daily life as you desire with the support of Liberty Personally Designed Living™, an innovative approach to personal care and assistance. Nicely appointed common areas are well-suited for group or casual gatherings, while social and recreational opportunities create a sense of community.*

### Distinctive Details

---

- ~ Bright spacious floor plans
- ~ Kitchen with appliances and maple cabinetry
- ~ In-home laundry in some apartments
- ~ Accessible bathroom with grab bar and roll-in shower
- ~ Individually controlled heat and central air conditioning

At Carondelet Village we know each individual is just that—an individual. And our services reflect that philosophy. Select from a broad range of options depending on your personal preferences. It's all based on the principle of choice. And the choice is yours.

### Included Amenities

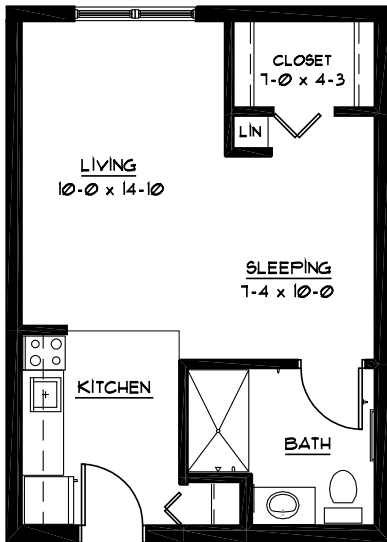
---

- ~ Two daily meals
- ~ Complimentary escort service for first 5 days
- ~ Flexible dining hours
- ~ Weekly light housekeeping and linen change
- ~ Pastoral care
- ~ Wings® wellness six dimensional program (social, emotional, spiritual, physical, intellectual, vocational)
- ~ Urgent call system
- ~ 24 hour on-site Resident Assistant staffing
- ~ Designated complimentary transportation to shopping and outings
- ~ Controlled access community entrance
- ~ All utilities (heat, electric, central air conditioning, water, sewer and trash)
- ~ Basic satellite service and installation
- ~ Public Wi-Fi
- ~ Basic internet service support
- ~ In-house information television channel
- ~ Local telephone service (landline)
- ~ Complimentary laundry facilities
- ~ Priority access to other Presbyterian Homes & Services living and care options based on availability
- ~ Smoke-free community
- ~ Access to Carondelet Circle amenities

### Other Conveniences (ADDITIONAL FEES MAY APPLY)

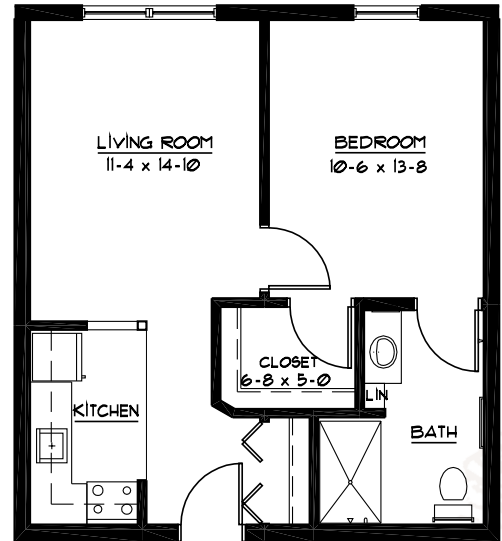
---

- ~ Coordination of specialized nursing and therapy visits
- ~ Physical, speech and occupational therapy
- ~ Consulting Registered Dietician
- ~ Diabetic program
- ~ Assistance with arranging transportation to medical and social service appointments
- ~ Assistance with accessing community resources and social services
- ~ Transportation for shopping and outings
- ~ Access to designated Physician or Nurse Practitioner for on-site services
- ~ Additional home care and hospice services available through Optage®
- ~ Cable television service packages
- ~ Guest dining / Guest suite
- ~ Second occupant, \$600 plus personal care



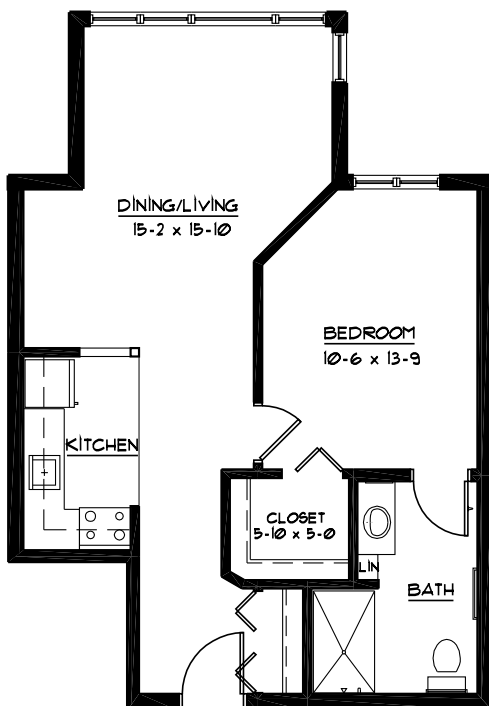
### CHICKADEE

Studio  
470 Sq Ft



### KINGLET

One Bedroom  
600 Sq Ft



### LARK SPARROW

One Bedroom  
660 Sq Ft

BETHANY COMMONS  
651-695-5000

FLOOR PLANS, FEATURES AND AMENITIES ARE SUBJECT TO CHANGE WITHOUT NOTICE. STATED DIMENSIONS AND SQUARE FOOTAGE ARE APPROXIMATE. TO VIEW ALL FLOOR PLANS GO TO [WWW.CARONDELETVILLE.ORG](http://WWW.CARONDELETVILLE.ORG)



## Monthly Fees

---

APARTMENT	SQUARE FEET	MONTHLY FEE
Studio	430 – 480	3,235
One Bedroom	520 – 690	\$3,400 – \$3,740
Two Bedroom	960	\$4,015
Two Bedroom/Two Bath	920 – 1,180	\$4,015 – \$4,240

## Monthly Personal Care Fees

---

In addition to the monthly fee, a monthly Points of Care Fee is required. A nurse will meet with you to assess your personal care needs, following a reservation deposit.

### All Points of Care levels include:

- ~ Initial nursing assessment
- ~ Scheduled nursing hours and on-call staff consultation
- ~ Nurse liaison with health care professionals
- ~ Quarterly Nurse review
- ~ Nurse coordination of laboratory requests
- ~ Nurse maintains clinical record information

### Points of Care Fees

Refer to the following page for a menu of the most common services and the points assigned to each.

Compare your total points of care from the next page with these ranges to estimate your monthly service fee:	Points	Monthly Fee
	0-9	\$350
	10-32	\$700
	33-55	\$1,050
	56-78	\$1,400
	79-101	\$1,750
	102-124	\$2,100
	125-147	\$2,450
148-170	\$2,800	
171-193	\$3,150	
For each additional 23 points, add \$210.		

PRICING SUBJECT TO CHANGE.

RESIDENCY AGREEMENT AVAILABLE UPON REQUEST.

Below is a sampling of personal care services that are available and the associated points. Please inquire to learn about additional services.

#### SHOWER

Multiply the # of desired showers/week by the rating

\_\_\_\_\_ [5] Per shower – no transfer assist

\_\_\_\_\_ [7] Per shower – 1 person transfer

\_\_\_\_\_ [10] Per shower – mechanical lift

#### BATH

Multiply the # of desired baths/week by the rating

\_\_\_\_\_ [9] Per bath – 1 person transfer

\_\_\_\_\_ [12] Per bath – mechanical lift

#### LIGHT BREAKFAST OR SNACK PREPARATION IN APARTMENT

\_\_\_\_\_ [11] Food & supplies provided by resident

#### MEAL ASSISTANCE

\_\_\_\_\_ [42] Consistent assistance with dining

#### BATHROOM ASSISTANCE

\_\_\_\_\_ [55] Standard – (1-6 times daily)

\_\_\_\_\_ [86] Standard – (7+ times daily)

\_\_\_\_\_ [86] Extensive – (1-6 times daily)

\_\_\_\_\_ [114] Extensive – (7+ times daily)

#### MORNING AND BEDTIME DRESSING AND GROOMING

\_\_\_\_\_ [42] Standard – no transfer assist

\_\_\_\_\_ [70] Extensive – 1 person transfer

\_\_\_\_\_ [84] Extensive – mechanical lift

#### ESCORT SERVICE

\_\_\_\_\_ [36] To meals, activities and appointments on premises

#### MEDICATION

\_\_\_\_\_ [15] Medication set-up (1-8 medications)

\_\_\_\_\_ [20] Medication set-up (9+ medications)

\_\_\_\_\_ [25] Syringe set-up (includes medication set-up)

\_\_\_\_\_ [10] Medication assistance (multiply # of times medications are given/day by the rating)

\_\_\_\_\_ [33] Sliding scale insulin set-up (includes medication set-up)

#### DIABETES MANAGEMENT

\_\_\_\_\_ [7] Blood sugar monitoring/insulin injection (1 time daily)

#### TASKS – 1 TIME DAILY

\_\_\_\_\_ [7] Standard – for example: reassurance checks and vital signs

\_\_\_\_\_ [11] Extensive – for example: nebulizer treatments; wound, ostomy or catheter care

Please inquire about other available services.

\_\_\_\_\_ TOTAL ESTIMATED POINTS

This estimate is offered for planning purposes only. A nurse will meet with you prior to move-in to determine services. Other charges may apply.

Building on the experience and integrity of its founders, Carondelet Village brings you the finest senior living community in the heart of St. Paul's Highland Park.

### Living Options

---

- ~ Senior apartments
- ~ Assisted living apartments
- ~ Assisted living memory care residence
- ~ Care center

At Carondelet Village, your home encompasses more than your individual residence and extends well beyond your front door.

### Carondelet Circle Highlights

---

- ~ Wellness center
- ~ Therapeutic pool
- ~ Rooftop and working gardens
- ~ Conservatory
- ~ Chapel
- ~ Reflection room
- ~ Beauty salon/barber shop
- ~ Restaurant-style dining
- ~ Bistro
- ~ Art, music, weaving, ceramics and handcraft studios
- ~ Woodland and prairie walking areas
- ~ Library
- ~ Technology studio with computers
- ~ Lounges
- ~ Auditorium
- ~ Theater
- ~ Market and gift shop
- ~ Medical and dental clinics
- ~ Rehabilitative therapy center
- ~ Massage suite
- ~ Conveniently located near shopping, parks, entertainment and bus line

Presbyterian Homes & Services (PHS) communities comply with applicable federal civil rights laws and do not discriminate on the basis of race, color, national origin, age, disability or sex. [www.preshomes.org](http://www.preshomes.org)

**Español (Spanish):** Llame al 1-844-558-6125

**Hmoob (Hmong):** Hu rau 1-844-558-6125

**Tagalog (Tagalog – Filipino):** Tumawag sa 1-844-558-6125



525 FAIRVIEW AVENUE SOUTH  
ST. PAUL, MN 55116

651-695-5000

[www.carondeletvillage.org](http://www.carondeletvillage.org)

Equal housing opportunity. All faiths welcome.   
8/17 Professional management by PHS Management, LLC

© 2010 Presbyterian Homes and Services.

A shared ministry of the Sisters of St. Joseph  
of Carondelet – St. Paul Province and  
Presbyterian Homes & Services.