



PINE ARBOR

ASSISTED LIVING MEMORY CARE

*The Arbor memory care provides a vibrant neighborhood setting where dedicated staff serve the unique needs of each individual with warmth and compassion. Stimulating activities and personalized care assure families their loved one has the opportunity to live life to the fullest.*

We believe that caring for the needs of those with dementia grants us an extraordinary opportunity for ministry. Our DOVE™ program is the culmination of many years of thoughtful consultation with staff, families, and leaders in the field of dementia research. DOVE™—Dementia Orientation Values Education—is a three-part approach to care that allows your loved one to receive the affirmation and reassurance they need.

Our dove lapel pin designates staff that have completed special training. The dove, a symbol of the Holy Spirit, symbolizes how each person is fully remembered by Him. Even with loss of memory, the spirit remains intact.

## The DOVE™ Program

We begin by assessing individual needs and creating a plan of care, and continue by supporting resident life-skills as well as involving and providing guidance to families. Encouraging independence and providing a sense of purpose, enjoyment, and success are our guiding principles.

Activities and specialized programming in three main areas are essential: life-skills, life-enrichment, and self-care.

- ~ Life-skill activities help recall the person's various roles in life. Some examples include setting tables, doing office work, and sharing hobbies.
- ~ Recreational and life-enriching activities provide an ongoing opportunity to engage in social gatherings or enjoy leisure activities. A wide range of activities may be offered such as quiet time, exercise, cognitive stimulation from current events and life review, baking, reading, playing a game, or spiritual reading and prayer.
- ~ Participation in self-care activities gives each individual a sense of independence and pride and enhances self-esteem. Bathing, dressing and grooming are examples of cares in which each resident is encouraged to assist to their fullest ability.

*The Arbor strives to ensure the comfort and convenience of residents and their families. From our inclusive amenities to comprehensive care options, families gain peace of mind knowing their loved one has support with all the comforts of home.*

## Included Amenities

---

- ~ Three daily meals and snacks served in the family dining room
- ~ Weekly light housekeeping and linen change
- ~ Urgent call system
- ~ 24 hour on-site Resident Assistant staffing
- ~ Residential setting with controlled access
- ~ All utilities (heat, electric, central air conditioning, water, sewer and trash)
- ~ Local telephone service (landline)
- ~ Basic satellite service and installation
- ~ Public Wi-Fi
- ~ Basic internet service support
- ~ In-house information television channel
- ~ The DOVE™ program
- ~ Pastoral care
- ~ Wings® wellness six dimensional program (social, emotional, spiritual, physical, intellectual, vocational)
- ~ Priority access to other Presbyterian Homes & Services living and care options based on availability
- ~ Smoke-free community
- ~ Access to Carondelet Circle amenities

## Other Conveniences (ADDITIONAL FEES MAY APPLY)

---

- ~ Pharmacy delivery
- ~ Coordination of specialized nursing and therapy visits (physical, speech and occupational)
- ~ Special diets
- ~ Consulting Registered Dietician
- ~ Diabetic program
- ~ Assistance with arranging transportation to medical and social service appointments
- ~ Assistance with accessing community resources and social services
- ~ Access to designated Physician or Nurse Practitioner for on-site services
- ~ Additional home care and hospice services available through Optage®
- ~ Additional housekeeping
- ~ Additional loads of laundry
- ~ Guest dining
- ~ Guest suites
- ~ Second occupant, \$650 plus personal care

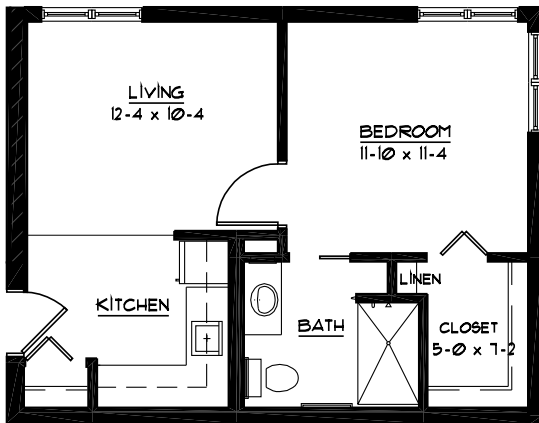
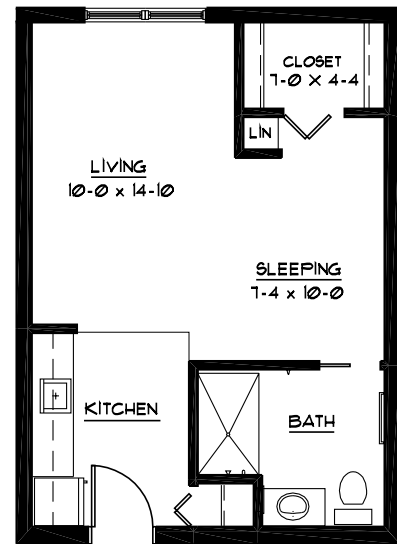
PINE ARBOR  
651-695-5000

*Carondelet*  
VILLAGE

SAMPLE FLOOR PLANS

**BLUE STEM**

Studio  
470 Sq Ft

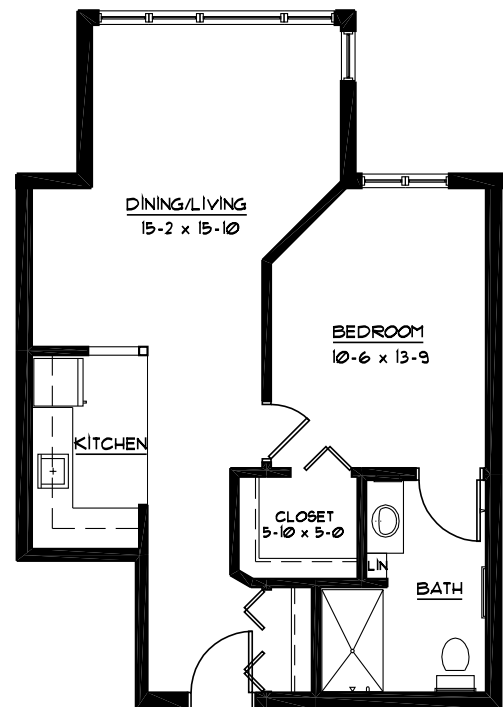


**MILKWEED**

One Bedroom  
520 Sq Ft

**SWEETGRASS**

One Bedroom  
660 Sq Ft



## Apartment Selection

APARTMENT	SQUARE FEET	APARTMENT FEE
Studio	460 – 480	\$3,460
One Bedroom	500 – 660	\$3,620 – \$3,880

## Personal Care Fee

Engaging programs and comforting amenities are just the beginning of the services provided. A nurse will meet with you to assess the level of assistance needed. Please inquire about other available services.

All Personal Care levels include the following:

- ~ Laundry – up to 3 loads per week
- ~ Assistance to meals and activities, including reminders and redirection
- ~ Reassurance and comfort care
- ~ Scheduled Nursing hours and on-call staff consultation
- ~ Initial nursing assessment
- ~ Nurse consultation with health care professionals as needed
- ~ Quarterly Nurse review
- ~ Nurse maintains clinical record
- ~ Coordination of laboratory requests

### Personal Care I - \$2,295/MONTH

- ~ Prompts and reminders for dressing, grooming and bathroom assistance
- ~ Shower assistance (1-3 times weekly)
- ~ Dining preparation and observation
- ~ Simple medication management, providing set-up and administration but not including injections

### Personal Care II - \$3,135/MONTH

- ~ Simple or Standard dressing and grooming assistance
- ~ Standard bathroom assistance
- ~ Shower assistance (4-5 times weekly)
- ~ Dining preparation and observation
- ~ Oxygen management
- ~ Complex medication management including blood sugar monitoring
- ~ Simple behavior redirection
- ~ 1 person transfers

### Personal Care III - \$3,975/MONTH

- ~ Extensive dressing and grooming assistance
- ~ Extensive bathroom assistance
- ~ Shower assistance (6+ times weekly)
- ~ Consistent assistance with dining
- ~ Oxygen management
- ~ Complex medication management including blood sugar monitoring, insulin injections, and sliding scale management
- ~ Complex or frequent behavior redirection
- ~ Mechanical lift transfers

## Total Monthly Fees

Apartment Selection	\$ _____
Personal Care (REQUIRED)	\$ _____
<b>ESTIMATED TOTAL</b>	<b>\$ _____</b>

PRICING SUBJECT TO CHANGE.  
RESIDENCY AGREEMENT AVAILABLE UPON REQUEST.

Building on the experience and integrity of its founders, Carondelet Village brings you the finest senior living community in the heart of St. Paul's Highland Park.

### Living Options

---

- ~ Senior apartments
- ~ Assisted living apartments
- ~ Assisted living memory care residence
- ~ Care center

At Carondelet Village, your home encompasses more than your individual residence and extends well beyond your front door.

### Carondelet Circle Highlights

---

- ~ Wellness center
- ~ Therapeutic pool
- ~ Rooftop and working gardens
- ~ Conservatory
- ~ Chapel
- ~ Reflection room
- ~ Beauty salon/barber shop
- ~ Restaurant-style dining
- ~ Bistro
- ~ Art, music, weaving, ceramics and handcraft studios
- ~ Woodland and prairie walking areas
- ~ Library
- ~ Technology studio with computers
- ~ Lounges
- ~ Auditorium
- ~ Theater
- ~ Market and gift shop
- ~ Medical and dental clinics
- ~ Rehabilitative therapy center
- ~ Massage suite
- ~ Conveniently located near shopping, parks, entertainment and bus line

Presbyterian Homes & Services (PHS) communities comply with applicable federal civil rights laws and do not discriminate on the basis of race, color, national origin, age, disability or sex. [www.preshomes.org](http://www.preshomes.org)

**Español (Spanish):** Llame al 1-844-558-6125

**Hmoob (Hmong):** Hu rau 1-844-558-6125

**Tagalog (Tagalog – Filipino):** Tumawag sa 1-844-558-6125



525 FAIRVIEW AVENUE SOUTH  
ST. PAUL, MN 55116

651-695-5000

[www.carondeletvillage.org](http://www.carondeletvillage.org)

Equal housing opportunity. All faiths welcome.   
8/17 Professional management by PHS Management, LLC

© 2010 Presbyterian Homes and Services.

A shared ministry of the Sisters of St. Joseph  
of Carondelet – St. Paul Province and  
Presbyterian Homes & Services.