



BETHANY COMMONS ASSISTED LIVING

For a setting that offers freedom combined with the comfort of knowing supportive services are available, choose The Commons assisted living. Shape your daily life as you desire with the support of Liberty Personally Designed Living™, an innovative approach to personal care and assistance. Nicely appointed common areas are well-suited for group or casual gatherings, while social and recreational opportunities create a sense of community.

Distinctive Details

- ~ Bright spacious floor plans
- ~ Kitchen with appliances and maple cabinetry
- ~ In-home laundry in some apartments
- ~ Accessible bathroom with grab bar and roll-in shower
- ~ Individually controlled heat and central air conditioning

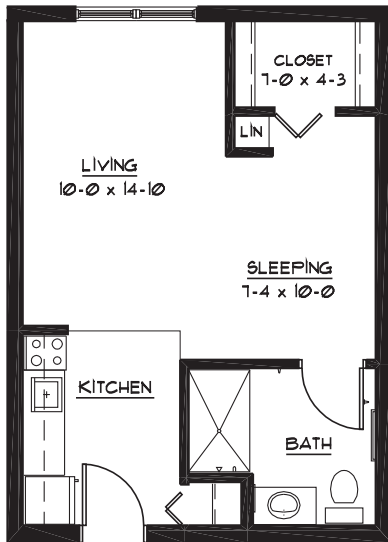
At Carondelet Village we know each individual is just that—an individual. And our services reflect that philosophy. Select from a broad range of options depending on your personal preferences. It's all based on the principle of choice. And the choice is yours.

Included Amenities

- ~ Two daily meals
- ~ Escorts to meals and activities for first 5 days
- ~ Flexible dining hours
- ~ Weekly light housekeeping and linen change
- ~ Pastoral care*
- ~ Wings® wellness intellectually stimulating programs, spiritual care services, group fitness classes, fitness center with pool, volunteer opportunities*
- ~ Urgent call system
- ~ 24 hour on-site Resident Assistant staffing
- ~ Designated complimentary transportation to shopping and outings*
- ~ Controlled entrance
- ~ Utilities (heat, electric, central air conditioning, water, sewer and trash)
- ~ Basic cable television service
- ~ Open public Wi-Fi
- ~ Basic internet service support
- ~ Telephone service
- ~ Laundry facilities
- ~ Priority access to other Presbyterian Homes & Services living and care options based on availability
- ~ Smoke-free community
- ~ Access to Carondelet Circle amenities*

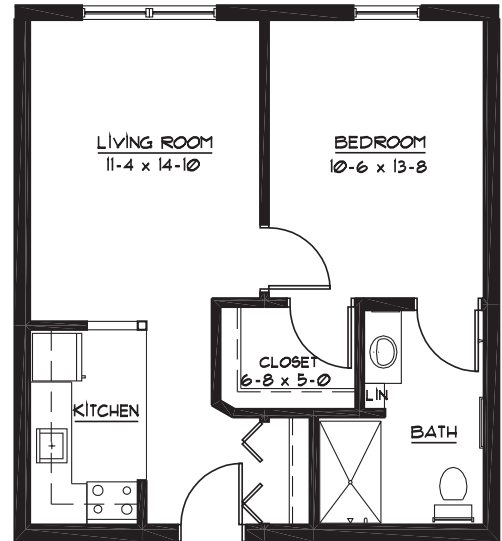
Other Conveniences (ADDITIONAL FEES MAY APPLY)

- ~ Coordination of specialized nursing and therapy visits
- ~ Physical, speech and occupational therapy
- ~ Consulting Registered Dietician
- ~ Diabetic program
- ~ Assistance with arranging transportation to medical and social service appointments
- ~ Assistance with accessing community resources and social services
- ~ Transportation for shopping and outings*
- ~ Access to designated Physician or Nurse Practitioner for on-site services*
- ~ Additional home care and hospice services available through Optage®
- ~ Cable television service packages
- ~ Guest dining / Guest suite*
- ~ Second occupant, \$700 plus personal care



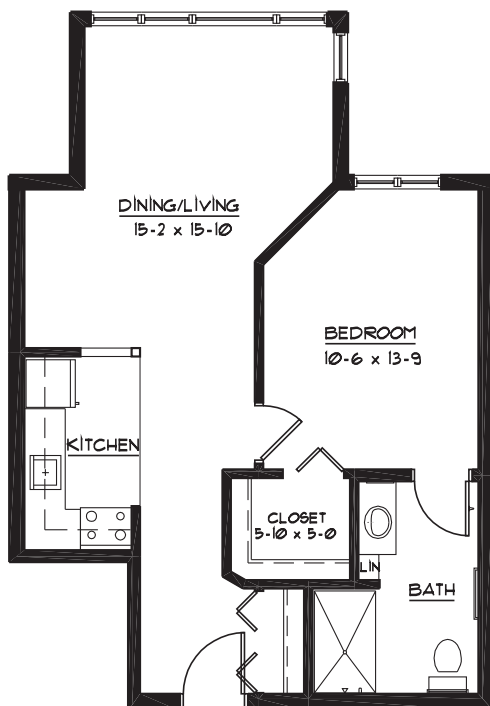
CHICKADEE

Studio
470 Sq Ft



KINGLET

One Bedroom
600 Sq Ft



LARK SPARROW

One Bedroom
660 Sq Ft

BETHANY COMMONS
651-695-5000

FLOOR PLANS, FEATURES AND AMENITIES ARE SUBJECT TO CHANGE WITHOUT NOTICE. STATED DIMENSIONS AND SQUARE FOOTAGE ARE APPROXIMATE. TO VIEW ALL FLOOR PLANS GO TO WWW.CARONDELETVILLE.ORG



Monthly Rent

APARTMENT	SQUARE FEET	MONTHLY FEE
Studio	430 – 480	\$3,470
One Bedroom	520 – 690	\$3,645 – \$4,010
Two Bedroom	960	\$4,305
Two Bedroom/Two Bath	920 – 1,180	\$4,305 – \$4,545

Monthly Personal Care Fees

In addition to the monthly fee, a monthly Points of Care Fee is required. A nurse will meet with you to assess your personal care needs, following a reservation deposit.

All Points of Care levels include:

- ~ Initial nursing assessment
- ~ Scheduled nursing hours and on-call staff consultation
- ~ Nurse liaison with health care professionals
- ~ Quarterly Nurse review
- ~ Nurse coordination of laboratory requests
- ~ Nurse maintains clinical record information

Points of Care Fees

Refer to the following page for a menu of the most common services and the points assigned to each.

<p>Compare your total points of care from the next page with these ranges to estimate your monthly service fee:</p>	Points	Monthly Fee
	0-9	\$380
	10-32	\$760
	33-55	\$1,140
	56-78	\$1,520
	79-101	\$1,900
	102-124	\$2,280
	125-147	\$2,660
	148-170	\$3,040
	171-193	\$3,420
<p>For each additional 23 points, add \$210.</p>		

PRICING SUBJECT TO CHANGE.

RESIDENCY AGREEMENT AVAILABLE UPON REQUEST.

Below is a sampling of personal care services that are available and the associated points. Please inquire to learn about additional services.

SHOWER

Multiply the # of desired showers/week by the rating

_____ [5] Per shower – no transfer assist

_____ [7] Per shower – 1 person transfer

_____ [10] Per shower – mechanical lift

BATH

Multiply the # of desired baths/week by the rating

_____ [9] Per bath – 1 person transfer

_____ [12] Per bath – mechanical lift

LIGHT BREAKFAST OR SNACK PREPARATION IN APARTMENT

_____ [11] Food & supplies provided by resident

MEAL ASSISTANCE

_____ [42] Consistent assistance with dining

BATHROOM ASSISTANCE

_____ [55] Standard – (1-6 times daily)

_____ [86] Standard – (7+ times daily)

_____ [86] Extensive – (1-6 times daily)

_____ [114] Extensive – (7+ times daily)

MORNING AND BEDTIME DRESSING AND GROOMING

_____ [42] Standard – no transfer assist

_____ [70] Extensive – 1 person transfer

_____ [84] Extensive – mechanical lift

ESCORT SERVICE

_____ [36] To meals, activities and appointments on premises

MEDICATION

_____ [15] Medication set-up (1-8 medications)

_____ [20] Medication set-up (9+ medications)

_____ [25] Syringe set-up (includes medication set-up)

_____ [10] Medication assistance (multiply # of times medications are given/day by the rating)

_____ [33] Sliding scale insulin set-up (includes medication set-up)

DIABETES MANAGEMENT

_____ [7] Blood sugar monitoring/insulin injection (1 time daily)

TASKS – 1 TIME DAILY

_____ [7] Standard – for example: reassurance checks and vital signs

_____ [11] Extensive – for example: nebulizer treatments; wound, ostomy or catheter care

Please inquire about other available services.

_____ TOTAL ESTIMATED POINTS

This estimate is offered for planning purposes only. A nurse will meet with you prior to move-in to determine services. Other charges may apply.

Building on the experience and integrity of its founders, Carondelet Village brings you the finest senior living community in the heart of St. Paul's Highland Park.

Living Options

- ~ Senior apartments
- ~ Assisted living apartments
- ~ Assisted living memory care residence
- ~ Care center

At Carondelet Village, your home encompasses more than your individual residence and extends well beyond your front door.

Carondelet Circle Highlights

- ~ Wellness center*
- ~ Therapeutic pool*
- ~ Rooftop and working gardens
- ~ Conservatory*
- ~ Chapel*
- ~ Reflection room*
- ~ Beauty salon/barber shop*
- ~ Restaurant-style dining*
- ~ Bistro*
- ~ Art, music, weaving, ceramics and handcraft studios*
- ~ Woodland and prairie walking areas
- ~ Library*
- ~ Technology studio with computers*
- ~ Lounges*
- ~ Auditorium*
- ~ Theater*
- ~ Market and gift shop
- ~ Medical and dental clinics*
- ~ Rehabilitative therapy center
- ~ Massage suite*
- ~ Conveniently located near shopping, parks, entertainment and bus line



525 FAIRVIEW AVENUE SOUTH
ST. PAUL, MN 55116

651-695-5000

www.carondeletvillage.org

Equal housing opportunity.
All faiths welcome.

*Due to COVID-19 or other future circumstance, this and other features may be temporarily unavailable or offered in a different way. We anticipate features will become available in original form once it is prudent to do so. Please refer to the Special Message attachment for a list of the most common modifications to standard practices and offerings.

Presbyterian Homes & Services (PHS) communities comply with applicable federal civil rights laws and do not discriminate on the basis of race, color, national origin, age, disability or sex. www.preshomes.org

Español (Spanish): Llame al 1-844-558-6125

Hmoob (Hmong): Hu rau 1-844-558-6125

Tagalog (Tagalog – Filipino): Tumawag sa 1-844-558-6125

9/20 A small icon of a person in a wheelchair, indicating accessibility.

Professional management by PHS Management, LLC
© 2010 Presbyterian Homes and Services.

A shared ministry of the Sisters of St. Joseph
of Carondelet – St. Paul Province and
Presbyterian Homes & Services.