



PINE ARBOR  
ASSISTED LIVING MEMORY CARE

*The Arbor memory care provides a vibrant neighborhood setting where dedicated staff serve the unique needs of each individual with warmth and compassion. Stimulating activities and personalized care assure families their loved one has the opportunity to live life to the fullest.*

We believe that caring for the needs of those with dementia grants us an extraordinary opportunity for ministry. Our DOVE™ program is the culmination of many years of thoughtful consultation with staff, families, and leaders in the field of dementia research. DOVE™—Dementia Orientation Values Education—is a three-part approach to care that allows your loved one to receive the affirmation and reassurance they need.

Our dove lapel pin designates staff that have completed special training. The dove, a symbol of the Holy Spirit, symbolizes how each person is fully remembered by Him. Even with loss of memory, the spirit remains intact.

## The DOVE™ Program

We begin by assessing individual needs and creating a plan of care, and continue by supporting resident life-skills as well as involving and providing guidance to families. Encouraging independence and providing a sense of purpose, enjoyment, and success are our guiding principles.

Activities and specialized programming in three main areas are essential: life-skills, life-enrichment, and self-care.

- ~ Life-skill activities help recall the person's various roles in life. Some examples include setting tables, doing office work, and sharing hobbies.
- ~ Recreational and life-enriching activities provide an ongoing opportunity to engage in social gatherings or enjoy leisure activities. A wide range of activities may be offered such as quiet time, exercise, cognitive stimulation from current events and life review, baking, reading, playing a game, or spiritual reading and prayer.\*
- ~ Participation in self-care activities gives each individual a sense of independence and pride and enhances self-esteem. Bathing, dressing and grooming are examples of cares in which each resident is encouraged to assist to their fullest ability.

*The Arbor strives to ensure the comfort and convenience of residents and their families. From our inclusive amenities to comprehensive care options, families gain peace of mind knowing their loved one has support with all the comforts of home.*

## Included Amenities

---

- ~ Three daily meals and snacks
- ~ Weekly light housekeeping and linen change
- ~ Urgent call system
- ~ 24 hour on-site Resident Assistant staffing
- ~ Residential setting with controlled entrance
- ~ Utilities (heat, electric, central air conditioning, water, sewer and trash)
- ~ Telephone service
- ~ Basic cable television service
- ~ Open public Wi-Fi
- ~ Basic internet service support
- ~ The DOVE™ program
- ~ Pastoral care\*
- ~ Wings® wellness intellectually stimulating programs, spiritual care services, group fitness classes, fitness center with pool, volunteer opportunities\*
- ~ Priority access to other Presbyterian Homes & Services living and care options based on availability
- ~ Smoke-free community
- ~ Access to Carondelet Circle amenities\*

## Other Conveniences (ADDITIONAL FEES MAY APPLY)

---

- ~ Pharmacy delivery
- ~ Coordination of specialized nursing and therapy visits (physical, speech and occupational)\*
- ~ Special diets
- ~ Consulting Registered Dietician
- ~ Diabetic program
- ~ Assistance with arranging transportation to medical and social service appointments
- ~ Assistance with accessing community resources and social services
- ~ Access to designated Physician or Nurse Practitioner for on-site/telehealth services
- ~ Additional home care and hospice services available through Optage®
- ~ Additional housekeeping\*
- ~ Additional loads of laundry
- ~ Guest dining\*
- ~ Guest suites\*
- ~ Second occupant, \$700 plus personal care

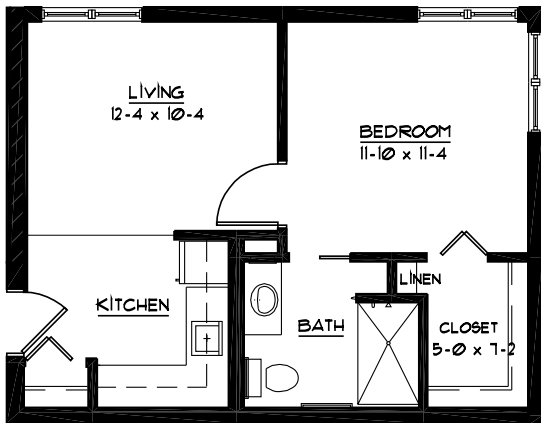
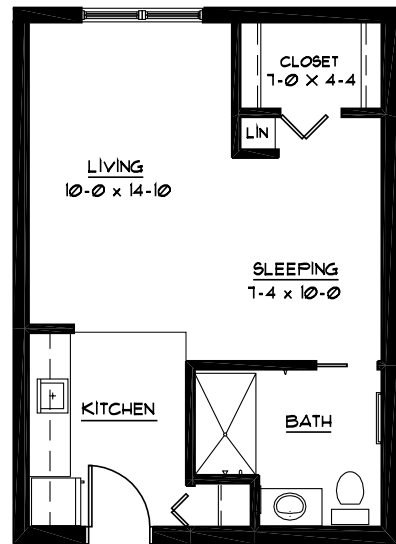
PINE ARBOR  
651-695-5000



SAMPLE FLOOR PLANS

**BLUE STEM**

Studio  
470 Sq Ft

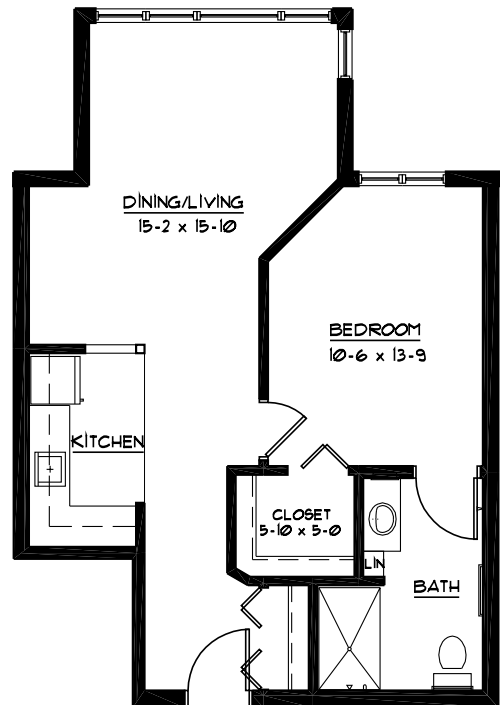


**MILKWEED**

One Bedroom  
520 Sq Ft

**SWEETGRASS**

One Bedroom  
660 Sq Ft



## Apartment Selection

---

APARTMENT	SQUARE FEET	APARTMENT FEE
Studio	460 – 480	\$3,710
One Bedroom	500 – 660	\$3,875 – \$4,160

## Personal Care Fee

---

Engaging programs and comforting amenities are just the beginning of the services provided. A nurse will meet with you to assess the level of assistance needed. Please inquire about other available services.

All Personal Care levels include the following:

- |   |   |
|---|---|
| ~ Laundry – up to 3 loads per week  | ~ Initial nursing assessment                                  |
| ~ Assistance to meals and activities, including reminders and redirection | ~ Nurse consultation with health care professionals as needed |
| ~ Reassurance and comfort care  | ~ Quarterly Nurse review                                      |
| ~ Scheduled Nursing hours and on-call staff consultation                  | ~ Nurse maintains clinical record                             |
|   | ~ Coordination of laboratory requests                         |

### Personal Care I - \$2,505/MONTH

- |  |  |
|--|--|
| ~ Prompts and reminders for dressing, grooming and bathroom assistance | ~ Simple medication management, providing set-up and administration but not including injections |
| ~ Shower assistance (1-3 times weekly)                                 |  |
| ~ Dining preparation and observation                                   |  |

### Personal Care II - \$3,420/MONTH

- |   |  |
|---|--|
| ~ Simple or Standard dressing and grooming assistance | ~ Oxygen management  |
| ~ Standard bathroom assistance                        | ~ Complex medication management including blood sugar monitoring |
| ~ Shower assistance (4-5 times weekly)                | ~ Simple behavior redirection                                    |
| ~ Dining preparation and observation                  | ~ 1 person transfers   |

### Personal Care III - \$4,335/MONTH

- |  |  |
|--|--|
| ~ Extensive dressing and grooming assistance | ~ Complex medication management including blood sugar monitoring, insulin injections, and sliding scale management |
| ~ Extensive bathroom assistance              | ~ Complex or frequent behavior redirection   |
| ~ Shower assistance (6+ times weekly)        | ~ Mechanical lift transfers  |
| ~ Consistent assistance with dining          |  |
| ~ Oxygen management                          |  |

## Total Monthly Fees

Apartment Selection	\$ _____
Personal Care (REQUIRED)	\$ _____
<b>ESTIMATED TOTAL</b>	<b>\$ _____</b>

PRICING SUBJECT TO CHANGE.  
RESIDENCY AGREEMENT AVAILABLE UPON REQUEST.

Building on the experience and integrity of its founders, Carondelet Village brings you the finest senior living community in the heart of St. Paul's Highland Park.

### Living Options

---

- ~ Senior apartments
- ~ Assisted living apartments
- ~ Assisted living memory care residence
- ~ Care center

At Carondelet Village, your home encompasses more than your individual residence and extends well beyond your front door.

### Carondelet Circle Highlights

---

- ~ Wellness center\*
- ~ Therapeutic pool\*
- ~ Rooftop and working gardens
- ~ Conservatory\*
- ~ Chapel\*
- ~ Reflection room\*
- ~ Beauty salon/barber shop\*
- ~ Restaurant-style dining\*
- ~ Bistro\*
- ~ Art, music, weaving, ceramics and handcraft studios\*
- ~ Woodland and prairie walking areas
- ~ Library\*
- ~ Technology studio with computers\*
- ~ Lounges\*
- ~ Auditorium\*
- ~ Theater\*
- ~ Market and gift shop
- ~ Medical and dental clinics\*
- ~ Rehabilitative therapy center
- ~ Massage suite\*
- ~ Conveniently located near shopping, parks, entertainment and bus line



525 FAIRVIEW AVENUE SOUTH  
ST. PAUL, MN 55116

651-695-5000

[www.carondeletvillage.org](http://www.carondeletvillage.org)

Equal housing opportunity.  
All faiths welcome.

\*Due to COVID-19 or other future circumstance, this and other features may be temporarily unavailable or offered in a different way. We anticipate features will become available in original form once it is prudent to do so. Please refer to the Special Message attachment for a list of the most common modifications to standard practices and offerings.

Presbyterian Homes & Services (PHS) communities comply with applicable federal civil rights laws and do not discriminate on the basis of race, color, national origin, age, disability or sex. [www.preshomes.org](http://www.preshomes.org)

**Español (Spanish):** Llame al 1-844-558-6125

**Hmoob (Hmong):** Hu rau 1-844-558-6125

**Tagalog (Tagalog – Filipino):** Tumawag sa 1-844-558-6125

9/20 A small icon of a person in a wheelchair, indicating accessibility.

Professional management by PHS Management, LLC  
© 2010 Presbyterian Homes and Services.

A shared ministry of the Sisters of St. Joseph  
of Carondelet – St. Paul Province and  
Presbyterian Homes & Services.