



*Carondelet*  
VILLAGE

TERRACE SENIOR APARTMENTS

WOODLAND / PRAIRIE / GARDEN



*Carondelet Village is a vibrant community with convenient services and amenities to enrich your life. The Terrace senior apartments offer maintenance-free living and comfortable, welcoming floor plans. Regardless of which plan you choose, it's sure to reflect your sense of style as you add your own personal touch.*

### Distinctive Details

---

- ~ Bright open floor plans emphasize spacious rooms with nine foot ceilings
- ~ Refrigerator, stove / self-cleaning oven, dishwasher and microwave
- ~ Convenient in-home laundry with washer and dryer
- ~ Patio or balcony
- ~ Blinds on all windows
- ~ Individually controlled heat and central air conditioning
- ~ Bathroom with step-in shower and grab bar
- ~ Gas fireplace and walk-in closets in select apartments

### Included Amenities

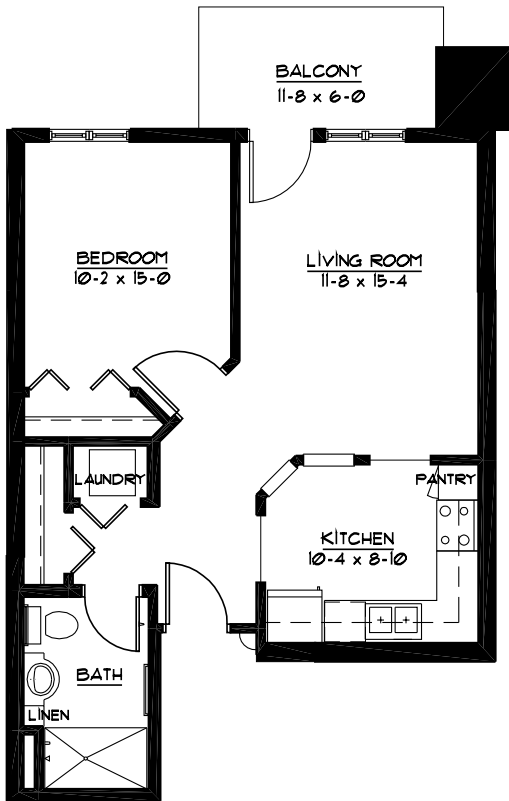
---

- ~ Utilities (heat, electric, central air conditioning, water, sewer and trash)
- ~ Telephone service
- ~ Basic cable television service
- ~ Open public Wi-Fi
- ~ Basic internet service support
- ~ Monthly light housekeeping\*
- ~ Urgent call system
- ~ Pastoral care\*
- ~ Wings® wellness intellectually stimulating programs, spiritual care services, group fitness classes, fitness center with pool, volunteer opportunities\*
- ~ Designated complimentary transportation to shopping and outings\*
- ~ Controlled entrance
- ~ Lawn care and snow removal
- ~ Apartment and building maintenance
- ~ Property tax and building insurance
- ~ Month-to-month residency agreement
- ~ Priority access to other Presbyterian Homes & Services living and care options based on availability
- ~ Smoke-free community
- ~ Access to Carondelet Circle amenities\*

### Other Conveniences (ADDITIONAL FEES MAY APPLY)

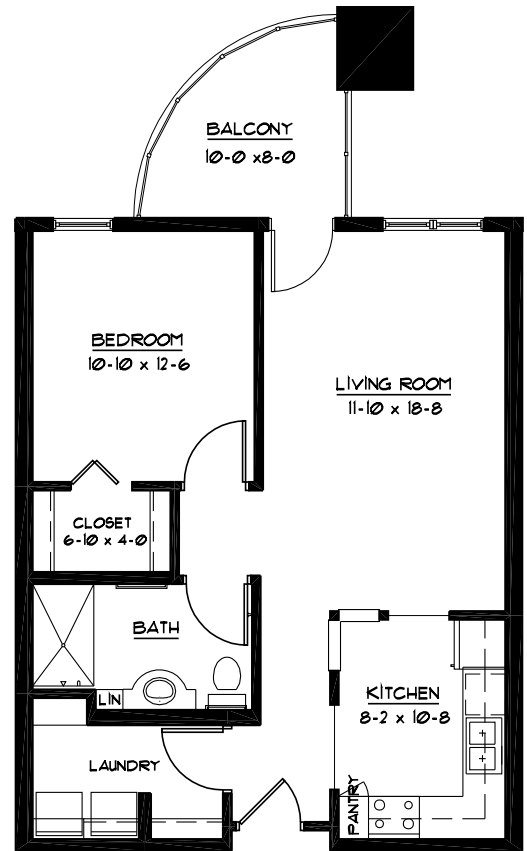
---

- ~ On-site dining options\*
- ~ Response to urgent calls
- ~ Underground heated parking and car wash bay
- ~ Additional storage
- ~ Additional housekeeping\*
- ~ Guest dining / Guest suites\*
- ~ Personal trainer\*
- ~ Home care and hospice services available through Optage®
- ~ Additional cable television service packages
- ~ Additional internet service support
- ~ Pets are welcome (guidelines apply)



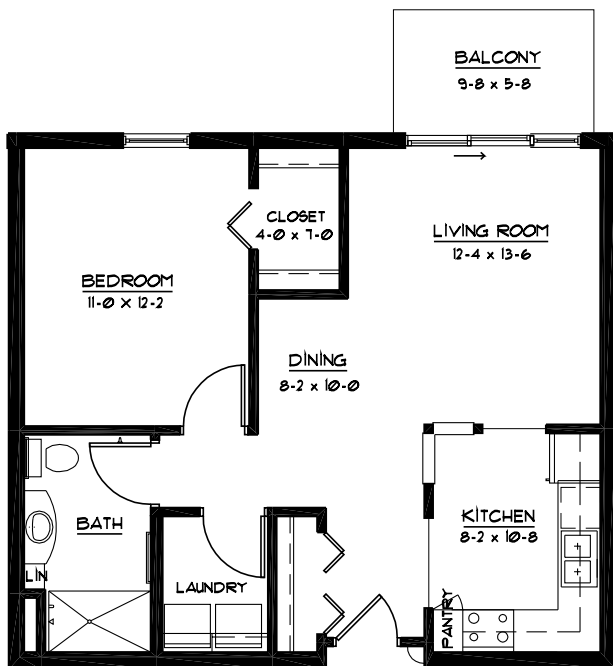
### ASTER

One Bedroom  
640 Sq Ft



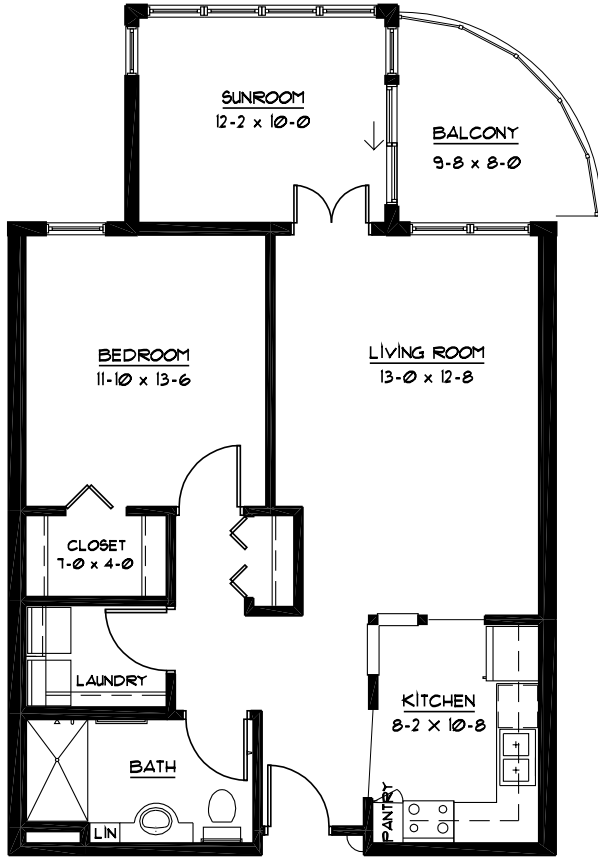
### BLAZING STAR 2

One Bedroom  
730 Sq Ft



### BLAZING STAR 3

One Bedroom  
750 Sq Ft



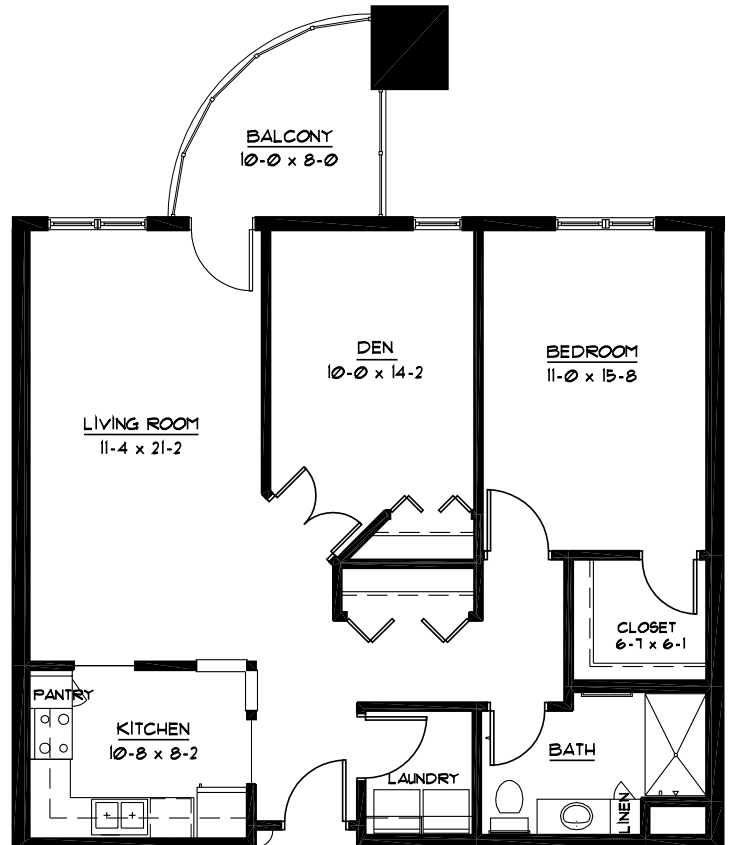
## CONEFLOWER

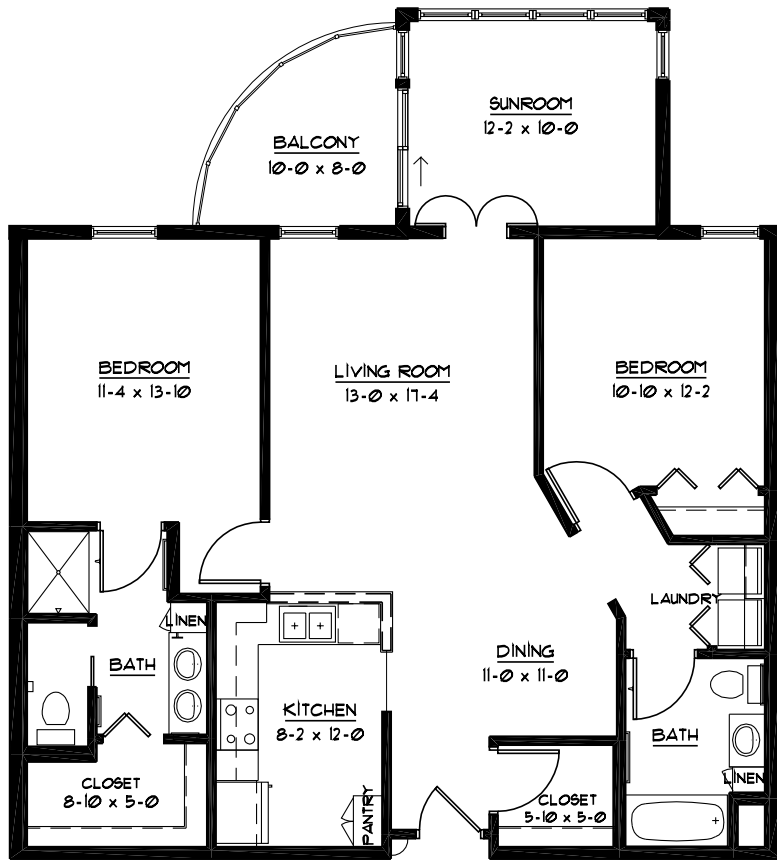
One Bedroom  
790 Sq Ft

One Bedroom / Sunroom  
930 Sq Ft (as shown)

## GENTIAN

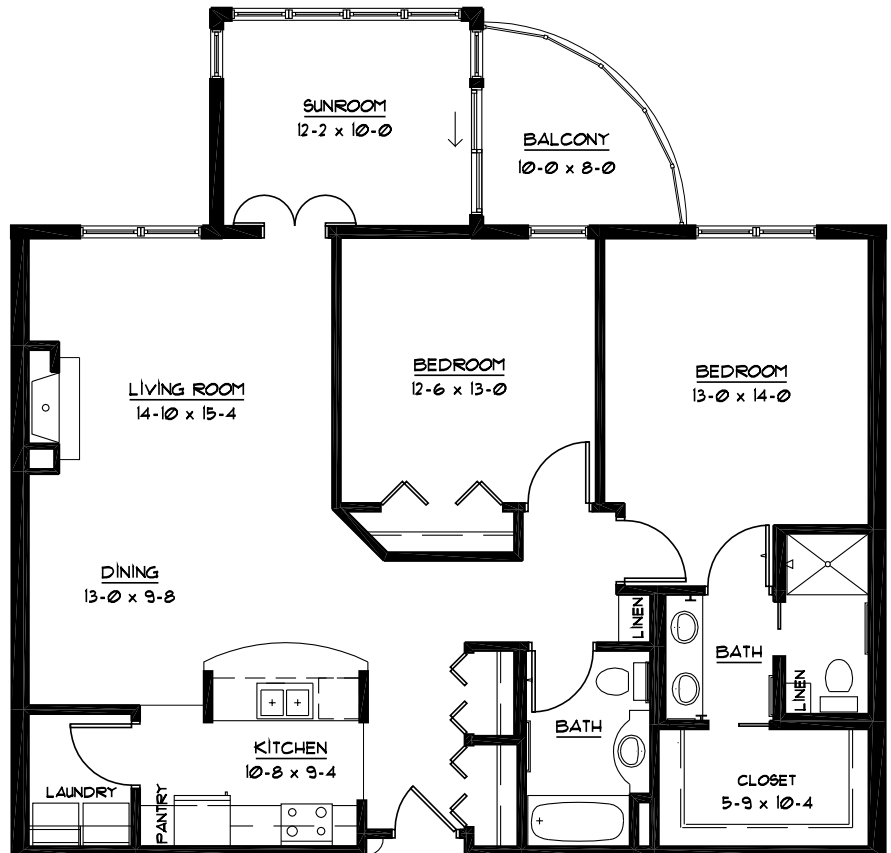
One Bedroom / Den  
1,040 Sq Ft

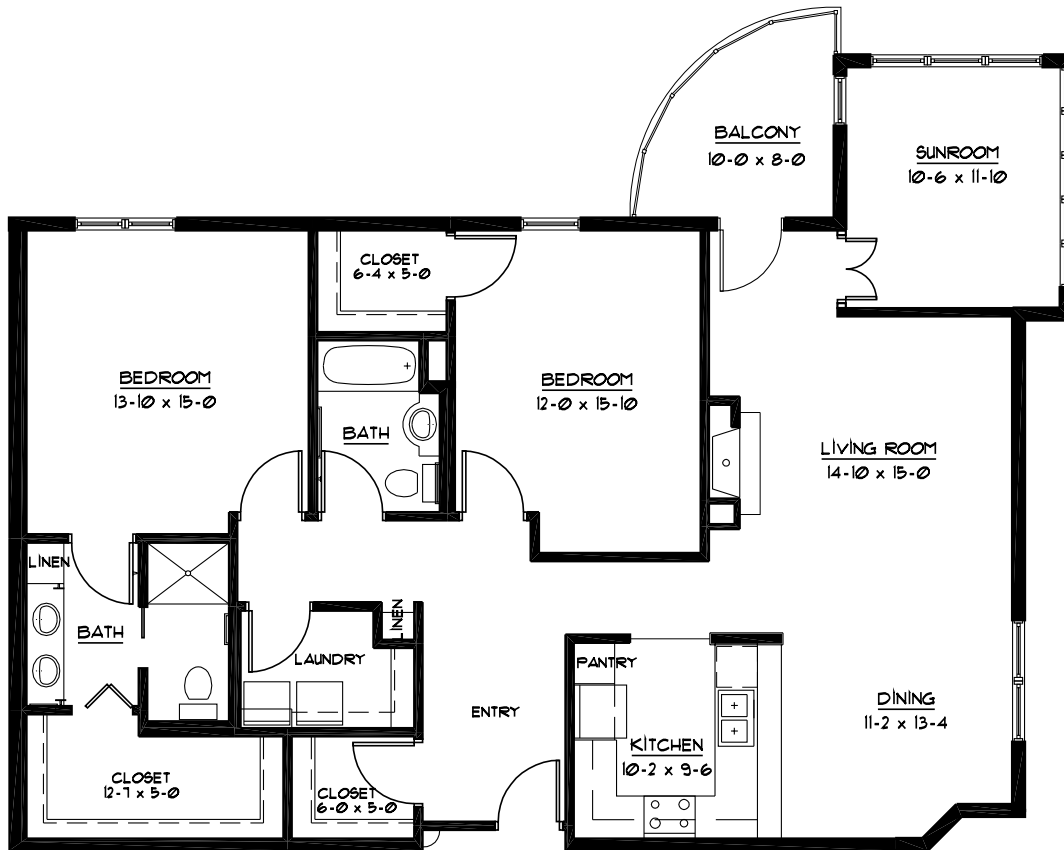




## LADYSLIPPER

Two Bedroom / Sunroom  
 1,420 Sq Ft





## VIOLET

Two Bedroom / Sunroom

1,610 Sq Ft

## Monthly Fees

---

APARTMENT	APARTMENT TYPE	SQUARE FEET	MONTHLY FEE
Aster	1 BR	640	\$1,515
Blazing Star	1 BR	710 – 860	\$1,785
Coneflower	1 BR	790	\$1,870
	1 BR / Sunroom	930	\$2,265
Daffodil	1 BR / Den	1,000	\$2,500
Evening Primrose	1 BR / Den	1,080 – 1,115	\$2,500
Gentian	1 BR / Den	1,040	\$2,500
Hibiscus	2 BR / 2 Bath	1,110 – 1,145	\$2,690
Iris	2 BR / 2 Bath	1,130	\$2,690
	2 BR / 2 Bath / Sunroom	1,270	\$3,125
Jasmine	2 BR / 2 Bath	1,260 – 1,270	\$2,945 – \$3,125
Ladyslipper	2 BR / 2 Bath / Sunroom	1,420	\$3,380
Sunflower	2 BR / 2 Bath / Den	1,490	\$3,380
Violet	2 BR / 2 Bath / Sunroom	1,610	\$3,630

PRICING SUBJECT TO CHANGE.  
RESIDENCY AGREEMENT AVAILABLE UPON REQUEST.

Building on the experience and integrity of its founders, Carondelet Village brings you the finest senior living community in the heart of St. Paul's Highland Park.

### Living Options

---

- ~ Senior apartments
- ~ Assisted living apartments
- ~ Assisted living memory care residence
- ~ Care center

At Carondelet Village, your home encompasses more than your individual residence and extends well beyond your front door.

### Carondelet Circle Highlights

---

- ~ Wellness center\*
- ~ Therapeutic pool\*
- ~ Rooftop and working gardens
- ~ Conservatory\*
- ~ Chapel\*
- ~ Reflection room\*
- ~ Beauty salon/barber shop\*
- ~ Restaurant-style dining\*
- ~ Bistro\*
- ~ Art, music, weaving, ceramics and handcraft studios\*
- ~ Woodland and prairie walking areas
- ~ Library\*
- ~ Technology studio with computers\*
- ~ Lounges\*
- ~ Auditorium\*
- ~ Theater\*
- ~ Market and gift shop
- ~ Medical and dental clinics\*
- ~ Rehabilitative therapy center
- ~ Massage suite\*
- ~ Conveniently located near shopping, parks, entertainment and bus line



525 FAIRVIEW AVENUE SOUTH  
ST. PAUL, MN 55116

651-695-5000

[www.carondeletvillage.org](http://www.carondeletvillage.org)

Equal housing opportunity.  
All faiths welcome.

\*Due to COVID-19 or other future circumstance, this and other features may be temporarily unavailable or offered in a different way. We anticipate features will become available in original form once it is prudent to do so. Please refer to the Special Message attachment for a list of the most common modifications to standard practices and offerings.

Presbyterian Homes & Services (PHS) communities comply with applicable federal civil rights laws and do not discriminate on the basis of race, color, national origin, age, disability or sex. [www.preshomes.org](http://www.preshomes.org)

**Español (Spanish):** Llame al 1-844-558-6125

**Hmoob (Hmong):** Hu rau 1-844-558-6125

**Tagalog (Tagalog – Filipino):** Tumawag sa 1-844-558-6125

9/20 A small icon of a person in a wheelchair, indicating accessibility.

Professional management by PHS Management, LLC  
© 2010 Presbyterian Homes and Services.

A shared ministry of the Sisters of St. Joseph  
of Carondelet – St. Paul Province and  
Presbyterian Homes & Services.